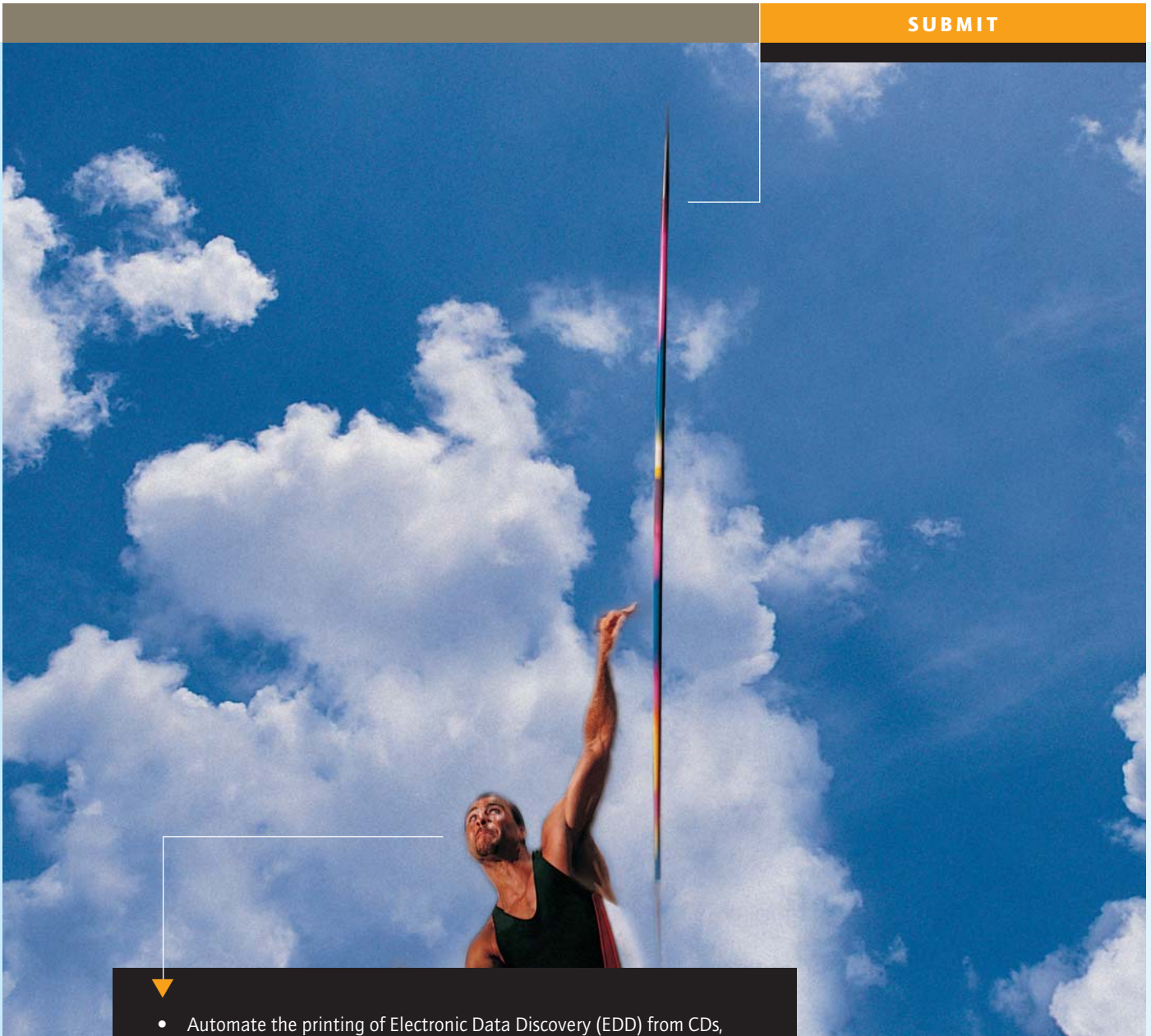


*Integrated. Workflow. Results.*

Unleash your  
electronic data  
with automated  
printing from  
CDPrint.

# CDPrint™ Pro & CDPrint™ Lite

SUBMIT



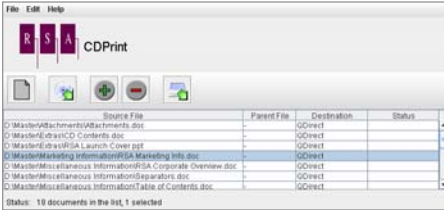
- Automate the printing of Electronic Data Discovery (EDD) from CDs, DVDs, or other media.
- Save hundreds of hours of labor each month.
- Increase client cost recovery with complete accounting.

**Rochester Software Associates, Inc.**



# CDPrint™ Pro & CDPrint™ Lite

**SUBMIT**



## SPECIFICATIONS

### • Supports common file formats including:

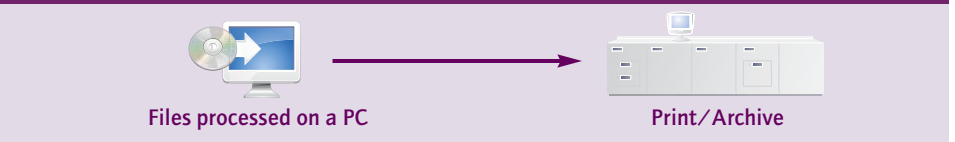
- Microsoft Outlook .PST email files and attachments
  - Microsoft Excel
  - Microsoft Word
  - Microsoft PowerPoint
  - Microsoft Publisher
  - Lotus 1-2-3
  - Lotus Word Pro
  - Visio
  - Corel Draw CDR
  - Corel/Novell Quattro Pro
  - Corel/Novell WordPerfect
  - AutoCAD
  - Extensible Markup Language
  - Graphics Interchange Format
  - HyperText Markup Language
  - PostScript PS Level II, III
  - PDF
  - Rich Text Format
  - Tagged Image File Format
- RSA recommends a minimum configuration of Pentium 4 processor 3.0 GHz, 1GB memory, 160 GB 7200 rpm hard drive.

Law firms receive EDD (Electronic Data Discovery) files on CD as part of litigation discovery. Printing vast numbers of files used to be a manual, time-consuming process—open each file, email, and email attachment, print, close the file, and record each file name and number of pages for cost recovery. Now, law firms can efficiently print EDD files in-house and legal print centers can increase print output by reducing manual labor.

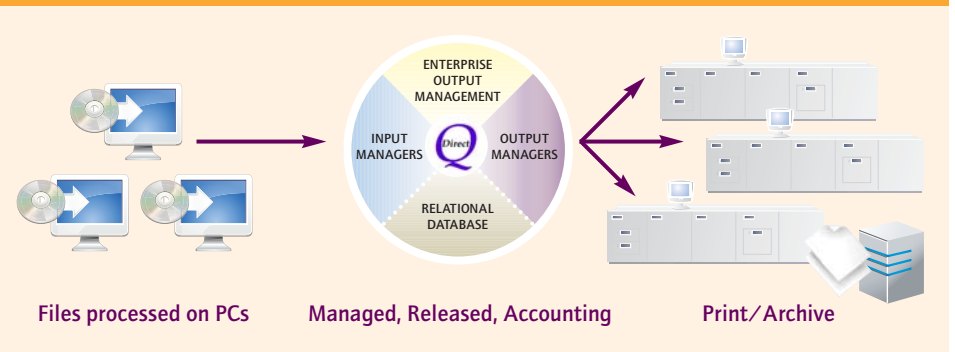
## Features and benefits

	CDPrint Pro	CDPrint Lite
CDPrint is a fully automated process—insert a CD, DVD, or select files from a disk and let it run!	X	X
EDD files are converted to print ready PDF files.	X	X
CDPrint processes common word processor, graphics, spreadsheet, presentation, database, and email files.	X	X
A Table of Contents page is generated listing all of the files processed, providing a detailed EDD audit trail.	X	X
Banner pages are generated to identify each file by name and to separate files as they are printed.	X	X
CDPrint output files can be optimized for specific production printers, further automating the printing process.	X	X
Users can identify file types that will be processed or ignored (such as files in PDF).	X	X
Basic accounting records maintained for proper chargeback.	X	X
Advanced accounting with validation.	X	
Integrate with RSA's BatesPrint to apply robust Bates labeling to processed documents prior to printing.	X	
Includes QDirect for Output Management.	X	
Load Balancing for efficient printing.	X	
Redirect jobs to different printers as desired.	X	
Reprint capability without reprocessing on PC.	X	
CDPrint is scalable—multiple PCs can process files concurrently.	X	

## CDPrint Lite workflow



## CDPrint Pro workflow



**Rochester Software Associates, Inc.**  
Integrated. Workflow. Results.

69 Cascade Drive  
Rochester, New York 14614  
www.rocsoft.com

Phone 585 . 262 . 2690  
Fax 585 . 262 . 4808  
Email RSAinfo@rocsoft.com